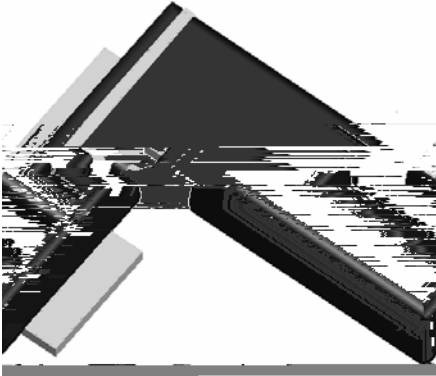


## Surface Mount Super Fast Recovery Rectifier

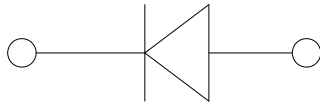


### Features

- Low profile package
- Ideal for automated placement
- Glass passivated chip junction
- High forward surge capability
- Super Fast reverse recovery time
- Meets MSL level 1, per J-STD-020, LF maximum peak of 260°C

### Typical Applications

For use in high frequency rectification of power supplies, inverters, converters, and freewheeling diodes for consumer and telecommunication.



### Mechanical Data

**Package:** SMBF

Molding compound meets UL 94 V-0 flammability rating, RoHS-compliant, halogen-free

**Terminals:** Tin plated leads, solderable per J-STD-002 and JESD22-B102

**Polarity:** Cathode line denotes the cathode end

### Maximum Ratings ( $T_a=25$ Unless otherwise specified)

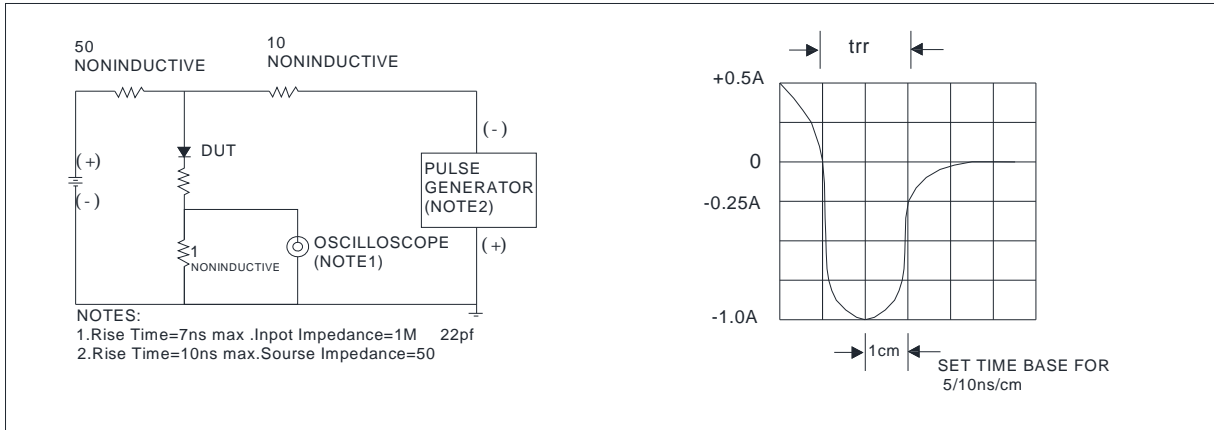
PARAMETER	SYMBOL	UNIT	UG2ABF	UG2BBF	UG2CBF	UG2DBF	UG2FBF	UG2GBF	UG2HBF	UG2JBF
Device marking code			UG2ABF	UG2BBF	UG2CBF	UG2DBF	UG2FBF	UG2GBF	UG2HBF	UG2JBF
Maximum Repetitive Peak Reverse Voltage	VRRM	V	50	100	150	200	300	400	500	600
Maximum RMS Voltage	VRMS	V	35	70	105	140	210	280	350	420
Maximum DC blocking Voltage	VDC	V	50	100	150	200	300	400	500	600
Average rectified output current @60Hz sine wave, resistance load, TL (Fig.1)	IO	A	2.0							
Forward Surge Current (Non-repetitive) @60Hz Half-sine wave, 1 cycle, Tj=25	IFSM	A	50							
Forward Surge Current (Non-repetitive) @1ms, square wave, 1 cycle, Tj=25			100							
Current squared time @1ms t 8.3ms Tj=25 Rating of per diode	I <sup>2</sup> t	A <sup>2</sup> s	10.375							
Typical junction capacitance @Measured at 1MHz and Applied Reverse Voltage of 4.0 V.D.C	Cj	pF	40				26		23	
Storage temperature	Tstg		-55 ~ +150							
Junction temperature	Tj		-55 ~ +150							



# UG2ABF THRU UG2JBF

---

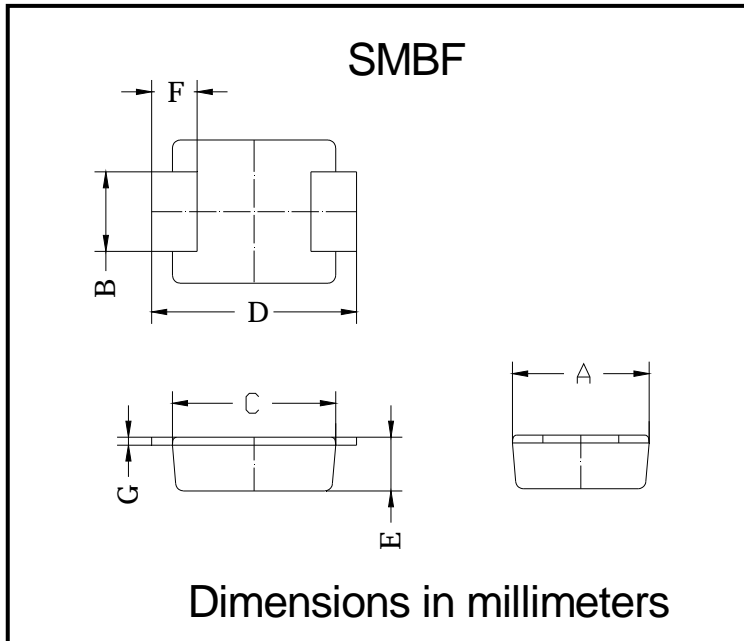
FIG.5: Diagram of circuit and Testing wave form of reverse recovery time



## Ordering Information (Example)

PREFERRED P/N	PACKING CODE	UNIT WEIGHT(g)	MINIMUM PACKAGE(pcs)	INNER BOX QUANTITY(pcs)	OUTER CARTON QUANTITY(pcs)	DELIVERY MODE
UG2ABF - UG2JBF	F1	Approximate 0.065	5000	/	80000	13" reel

## Outline Dimensions



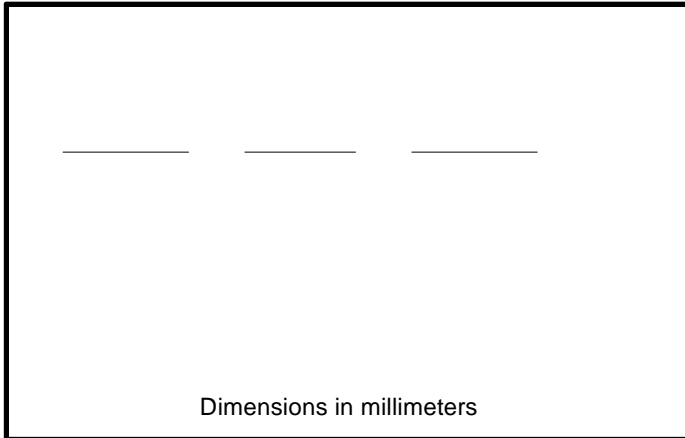
SMBF		
Dim	Min	Max
A	3.40	3.80
B	1.90	2.10
C	4.15	4.45
D	5.10	5.60
E	1.05	1.55
F	0.70	1.35
G	0.15	0.25



## UG2ABF THRU UG2JBF

---

### Suggested pad layout



Dim	Milimeters
P1	6.20
P2	2.40
Q1	1.90
Q2	2.20



## Disclaimer

The information presented in this document is for reference only. Yangzhou Yangjie Electronic Technology Co., Ltd. reserves the right to make changes without notice for the specification of the products displayed herein to improve reliability, function or design or otherwise.

The product listed herein is designed to be used with ordinary electronic equipment or devices, and not designed to be used with equipment or devices which require high level of reliability and the malfunction of which would directly endanger human life (such as medical instruments, transportation equipment, aerospace machinery, nuclear-reactor controllers, fuel controllers and other safety devices), Yangjie or anyone on its behalf, assumes no responsibility or liability for any damages resulting" er co b